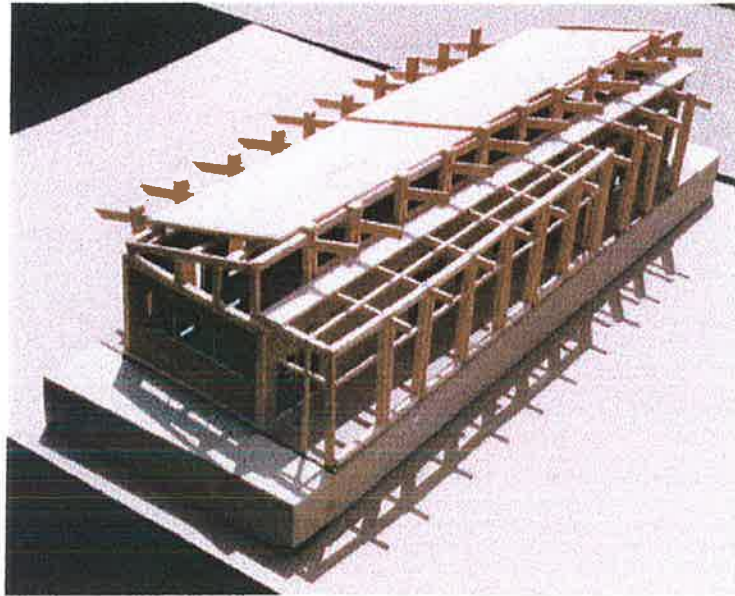


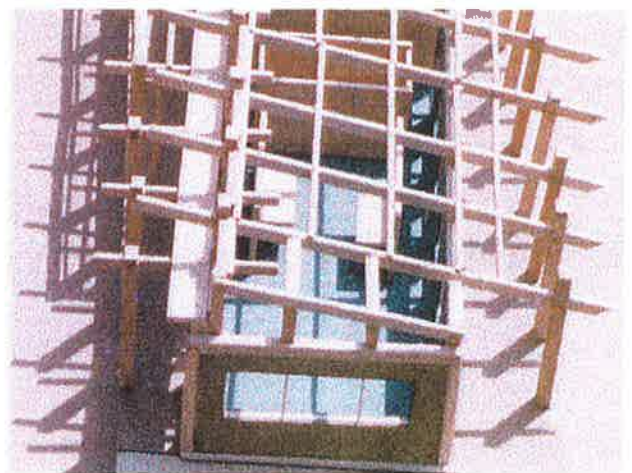
# House for Future Generations

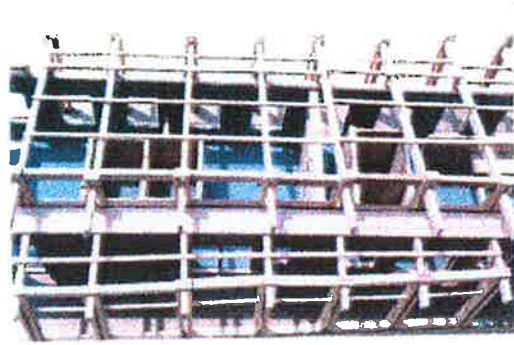


This linear sprawling home of three distinct parts comes together to create one place where space is more important than objects, walls and rooms.

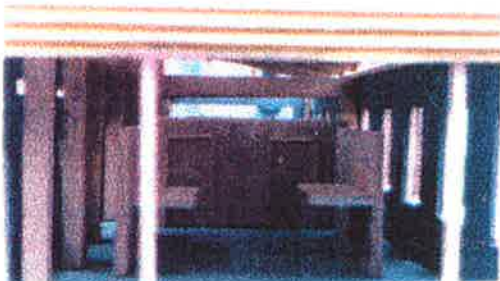
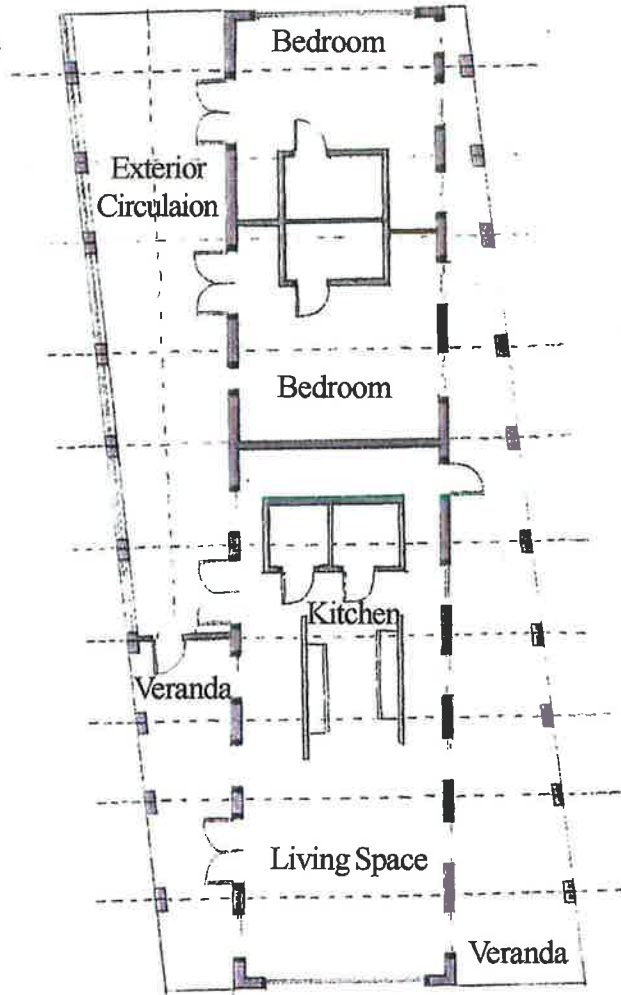


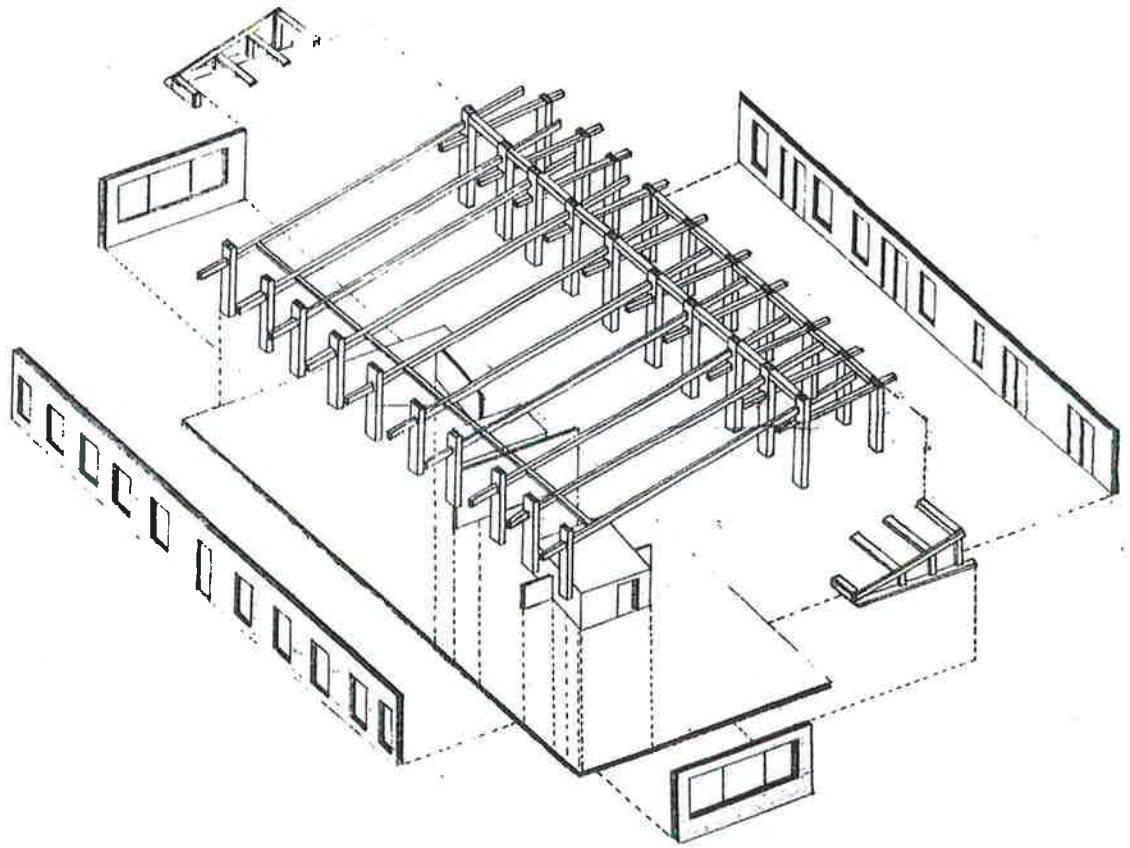
A structural system acting as ribs extend from one side to the other. These “ribs” create verandas on each side giving a sense of stability and security. The independent structural system carries the load of the roof while extending down to the ground in a distinct rhythm. This extension defines exterior spaces, creates elegant shadows, and encloses the exterior circulation.



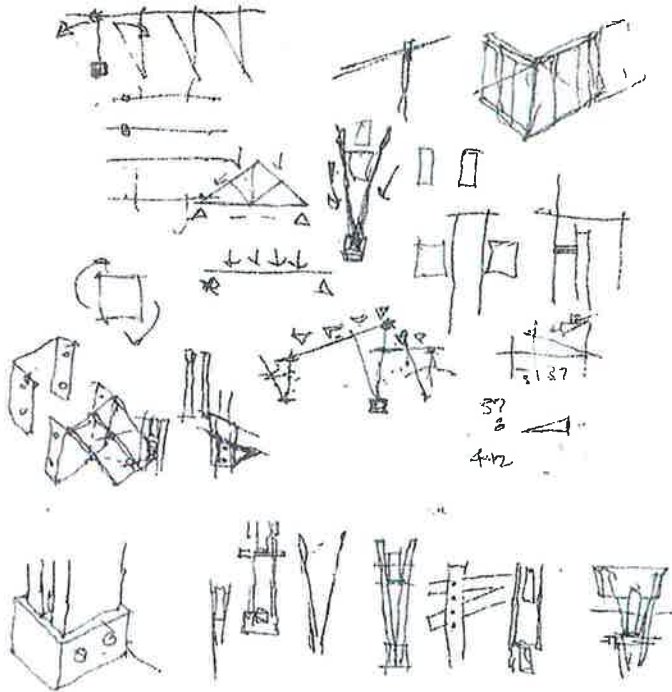


Floor Plan





Exploded Axonometric of pre-fabricated parts



Preliminary sketches of "rib construction"

The front and back elevations are enclosed in glass allowing sunlight to stream through the entire house. A simple rectangular box completely independent of the structural system provides open, sunlit, and versatile living spaces.

